

**Does your business
need a *backup plan*?**

 **ELECTRICITIES**

1427 Meadow Wood Blvd
Raleigh, NC 27604
919.760.6363

www.electricities.com
www.primepowerpark.org



PrimePowerPark™
Protecting Your Business With Backup Generation

**If a dependable, continuous power supply is critical to your company's manufacturing processes...
we have a place for you.**

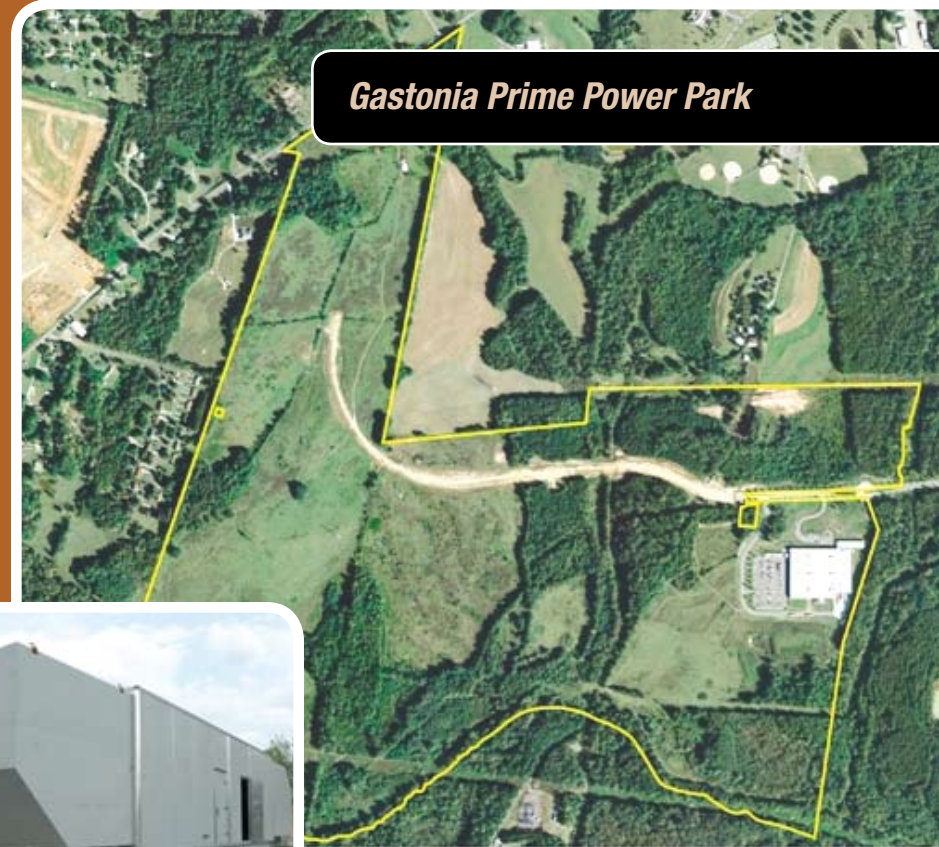
The Albemarle and Gastonia Prime Power Parks are the state's only two industrial parks featuring on-site backup power generation. That means tenants can protect their plant operations from power outage disruptions, without the cost of buying and maintaining their own redundant power systems. Currently, both the City of Albemarle and City of Gastonia offer Prime Power Parks.

Prime Power Park tenants will also enjoy affordable and flexible rates from the City of Albemarle or City of Gastonia, both North Carolina Public Power communities. And, of course, all the business-friendly benefits our right-to-work state is known for.



Albemarle Prime Power Park

- 4 MW of on-site backup power
- Flexible electric rate structure
- Adjacent to Stanly County Airport
- NC Certified Site - 180 Acres
- Near 0% union activity
- Free job training
- Incentives available
- Pro-business climate
- Easy access to eastern U.S. markets
- Low cost of living
- Outstanding quality of life
- Direct rail access from Charlotte/ Douglas International Airport



Gastonia Prime Power Park



- NC Certified Site - 330 Acres
- Sites range from 10 - 80 acres
- One mile north of I-85
- Located 15 miles from Charlotte/ Douglas International Airport
- 4 MW of on-site backup power
- Flexible electric rate structure
- Near 0% union activity
- Free job training
- Incentives available
- Pro-business climate
- Easy access to eastern U.S. markets
- Low cost of living
- Outstanding quality of life